

# JOB SAFE IS JOB SMART



With a long history of:

- Product Quality
- Customer Care &
- High Safety Standards

*Job Safe Information adapted from the National Ready Mix Concrete Association. Visit us at [chandlerconcrete.com](http://chandlerconcrete.com) for more customer resources*



# JOB SAFE - FOR ALL OF US

## Pre-Job Planning:

- Conduct a pre-construction Job Safe meeting.

## Placing Your Order:

- Specify job address and directions to job...are there any private bridges that will be crossed?
- Indicate names of building and job site landmarks.
- Communicate type of job and method of placement.
- Schedule accurate start/stop time - think about traffic and congestion.

## Preparing for Delivery:

- Ensure clear access: (Placement of equipment, vehicles, construction materials, etc. are clear of entry, wash-down and exit. Look for overhead obstacles - phone & power lines, trees, awnings..).
- Maintain safe distance to excavation (1 foot for every foot of depth).
- Prepare level, stable ground for truck access.
- Use pumps where practical.
- Our drivers will not cross non-rated or under-rated bridges.

## Day of Delivery:

- Plan for traffic control - street and jobsite.
- Use spotters where needed - use proper hand signals.
- Identify and maintain washout areas including area lighting, consider glare if lights are pointed towards backing mirrors.

<p><b>DRIVE IN</b></p>  <p><b>ENTRAR</b></p>	<p><b>BACK IN</b></p>  <p><b>ENTRAR EN RETROCESO</b></p>	<p><b>BACK UP</b></p>  <p><b>RETROCEDER</b></p>
<p><b>PULL FORWARD</b></p>  <p><b>ADELANTAR</b></p>	<p><b>STOP</b></p>  <p><b>PARAR</b></p>	<p><b>RAISE CHUTE LEVANTAR EL CONDUCTO</b></p>  <p><b>LOWER CHUTE BAJAR EL CONDUCTO</b></p>
<p><b>START POURING</b></p>  <p><b>COMENSAR ECHAR CONCRETO</b></p>	<p><b>MORE WATER</b></p>  <p><b>MAS AGUA</b></p>	<p><b>STOP POURING</b></p>  <p><b>PARAR ECHAR CONCRETO</b></p>

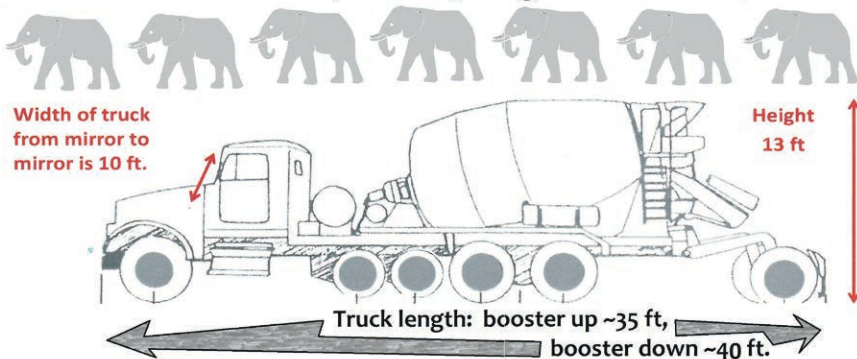
## Backing Safety & Use of a Spotter (NRMCA - adapted):

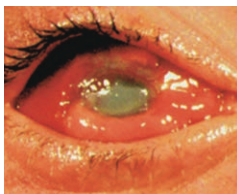
### Plan ahead:

Avoid backing trucks in whenever possible!  
Remove hazards before our trucks arrive.  
Walk the jobsite looking for access problems.  
Use proper hand signals (above).  
Help with people & vehicle traffic.

If you can't see driver in mirror - they can't see you. *Our drivers are instructed to stop!*  
Assist our driver if having to back into traffic or congested area. If in doubt, have driver stop!  
Don't get between our truck and a solid object (wall, post, pumps..)  
Lighting for all night work areas.

A loaded mixer with 10 yards may weigh more than **70,000 lbs.**





## SAFETY DATA SHEET CONCRETE CAN BURN YOU

More info on our website  
[chandlerconcrete.com](http://chandlerconcrete.com)

Download our updated SDS/MSDS



## WEAR PERSONAL PROTECTIVE EQUIPMENT

### SECTION 2 | HAZARD IDENTIFICATION



#### WARNING

Corrosive-causes severe burns.  
Toxic-Harmful by inhalation.  
(may contain crystalline silica)

Use proper engineering controls, work practices, and personal protective equipment (PPE) to prevent exposure to wet or dry product. **Read SDS for details.**



**Wear Proper PPE** (personal protective equipment) when working with wet/dry concrete. We recommend when working around concrete or concrete trucks that you wear:

- Hard hats
- Safety Glasses with side shields
- Bright/Reflective clothing or vests
- Long sleeve shirts when finishing concrete
- Gloves
- Rubber boots or waterproof boots

#### Other Precautions:

- Thoroughly wash concrete off of skin.
- Use respiratory protection for cutting/grinding/chipping or breaking dried concrete; wetting the concrete may reduce dust and potential silica exposure.
- If concrete gets in your eyes - flush eyes for a minimum of 15 minutes and seek professional medical treatment for possible abrasions or burns.

#### Equipment:

- Our driver will fold/unfold/attach and remove all truck chutes.
- Serious injury or death may result due to improper handling of the chutes.
- While placing concrete - maintain control of the chute swing at all times. Do not let go of the chute until you verify the lock is engaged.
- Do not operate chute or drum controls without direct authorization of the mixer driver.
- Do not climb on the mixer truck.
- Truck water is not considered potable for drinking.
- Know the hazards and precautions of all equipment on jobsite that you work around including: pumps, cranes, buckets, heavy equipment, etc...

*The information contained in this pamphlet is for informational purposes only and may not apply to your situation. Chandler Concrete Company, Inc. and its affiliates provide no warranty about the content or accuracy of the information herein.*

*Rev. 1/15/18*